

LOCATION MAP



STREET VIEW

Notes:

1. ALL PLANS ARE CREATED BY REALTY 360° VIEW AND MADE EXCLUSIVELY FOR REAL ESTATE MARKETING PURPOSES.  
 2. SIZED AND DIMENSIONS ARE APPROXIMATE. ACTUAL MAY VARY.

1	ISSUED FOR INFORMATION	MAB	11/18/20
PHASE	DESCRIPTION:	BY:	DATE:
STATUS: AS-BUILT			

REALTOR/BROKERAGE:

Russell Woodard   
 Mobile: (970) 679-9960  
 Office: (970) 669-1234  
 Email: russellwoodard@remax.net  
 My Website: <http://www.russellwoodard.com/>

PRESENTED BY:

  
**REALTY 360° VIEW**  
 Call or Text Us at: 720-770-1230  
 Email Direct at: CR@Realty360View.com  
 Website: <https://realty360view.com/>  
 Address: 242 Linden St Fort Collins, CO 80524

SITE/LOCATION:  
 1194 W. ASH ST. WINDSOR, CO 80550

TITLE:  
 AS-BUILT DRAWING

SCALE: NTS	DATE: 11/18/20	DRAWN: MAB	APPROVED: RGE
PROJECT NO: Prop.Tours/15e	SHEET NO: 1/7	PHASE: 1	



**EXCLUDED AREA**

PORCH 1	68sqft (ft <sup>2</sup> )
PORCH 2	61sqft (ft <sup>2</sup> )

**1ST FLR. INTERNAL AREA**

FOYER	115sqft (ft <sup>2</sup> )	STAIRS	65sqft (ft <sup>2</sup> )
RECEPTION 1	307sqft (ft <sup>2</sup> )	PANTRY 1	100sqft (ft <sup>2</sup> )
RECEPTION 2	161sqft (ft <sup>2</sup> )	PANTRY 2	130sqft (ft <sup>2</sup> )
RECEPTION OFFICE	78sqft (ft <sup>2</sup> )	PANTRY 3	59sqft (ft <sup>2</sup> )
WAITING AREA	231sqft (ft <sup>2</sup> )	TOILET 1	41sqft (ft <sup>2</sup> )
OFFICE 1	142sqft (ft <sup>2</sup> )	TOILET 2	43sqft (ft <sup>2</sup> )
OFFICE 2	260sqft (ft <sup>2</sup> )	TOILET 3	44sqft (ft <sup>2</sup> )
OFFICE 3	133sqft (ft <sup>2</sup> )	TOILET 4	42sqft (ft <sup>2</sup> )
OFFICE 4	90sqft (ft <sup>2</sup> )	TOILET 5	23sqft (ft <sup>2</sup> )
OFFICE 5	103sqft (ft <sup>2</sup> )	POWDER RM.	32sqft (ft <sup>2</sup> )
OFFICE 6	133sqft (ft <sup>2</sup> )	SHOWER 1	29sqft (ft <sup>2</sup> )
OFFICE 7	29sqft (ft <sup>2</sup> )	STORAGE 1	23sqft (ft <sup>2</sup> )
OFFICE 8	233sqft (ft <sup>2</sup> )	STORAGE 2	23sqft (ft <sup>2</sup> )
HALLWAY 2	70sqft (ft <sup>2</sup> )	STORAGE 3	29sqft (ft <sup>2</sup> )
HALLWAY 1	84sqft (ft <sup>2</sup> )	TOTAL INTERNAL AREA	2935sqft (ft <sup>2</sup> )

**TOTAL FOOTPRINT**

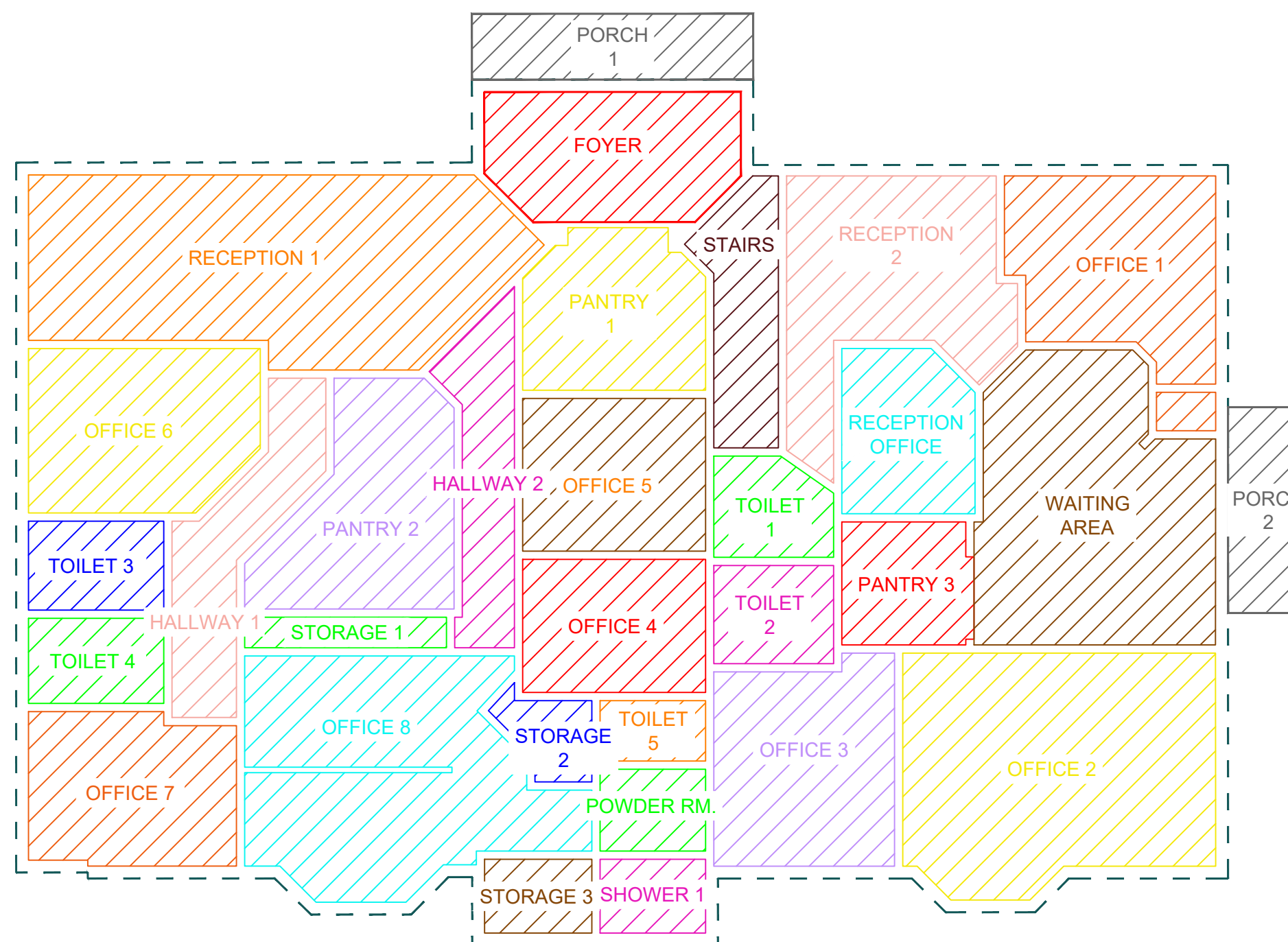
1ST FLOOR FOOTPRINT	3373sqft (ft <sup>2</sup> )
2ND FLOOR FOOTPRINT	1222sqft (ft <sup>2</sup> )
TOTAL (ft <sup>2</sup> )	4595sqft (ft <sup>2</sup> )

**TOTAL INTERNAL AREA**

1ST FLOOR FOOTPRINT	2935sqft (ft <sup>2</sup> )
2ND FLOOR FOOTPRINT	1049sqft (ft <sup>2</sup> )
TOTAL (ft <sup>2</sup> )	3984sqft (ft <sup>2</sup> )

**Notes:**

1. ALL PLANS ARE CREATED BY REALTY 360° VIEW AND MADE EXCLUSIVELY FOR REAL ESTATE MARKETING PURPOSES.  
2. SIZED AND DIMENSIONS ARE APPROXIMATE. ACTUAL MAY VARY.



**A FIRST FLOOR AREA CALCULATION**  
2/7 SCALE: 1/8"=1'-0"

**WALL LEGEND**

	EXISTING WALL
--	---------------

**ABBREVIATIONS**

T.O.P	TOP OF PARAPET
B.O.J	BOTTOM OF JOIST
B.O.D	BOTTOM OF DUCT
B.O.D	BOTTOM OF DUCT
F.F.L	FINISH FLOOR LINE
N.G.L	NATURAL GRADE LINE
CH	CEILING HEIGHT

1	ISSUED FOR INFORMATION	MAB	11/18/20
PHASE	DESCRIPTION:	BY:	DATE:

STATUS: **AS-BUILT**

REALTOR/BROKERAGE:  
**Russell Woodard**   
 Mobile: (970) 679-9960  
 Office: (970) 669-1234  
 Email: russellwoodard@remax.net  
 My Website: <http://www.russellwoodard.com/>

PRESENTED BY:  
  
**REALTY 360° VIEW**  
 Call or Text Us at: 720-770-1230  
 Email Direct at: CR@Realty360View.com  
 Website: <https://realty360view.com/>  
 Address: 242 Linden St Fort Collins, CO 80524

SITE/LOCATION:  
 1194 W. ASH ST. WINDSOR, CO 80550

TITLE:  
 AS-BUILT DRAWING

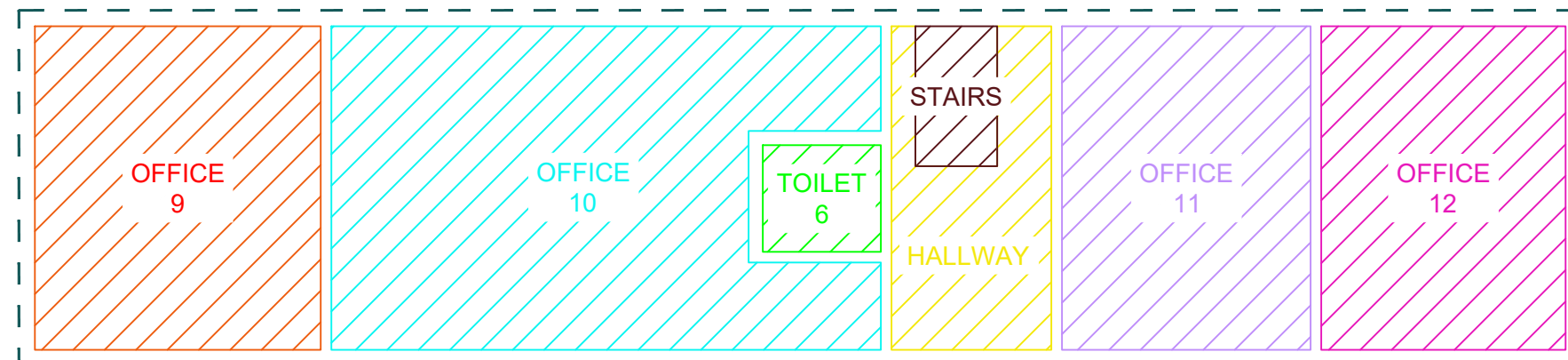
SCALE: 1/8"=1'-0"	DATE: 11/18/20	DRAWN: MAB	APPROVED: RGE
PROJECT NO: Prop.Tours/l5e	SHEET NO: 2/7	PHASE: 1	

### 2ND FLR. INTERNAL AREA

OFFICE 9	203sqft (ft <sup>2</sup> )
OFFICE 10	353sqft (ft <sup>2</sup> )
TOILET 6	28sqft (ft <sup>2</sup> )
STAIRS	25sqft (ft <sup>2</sup> )
HALLWAY	89sqft (ft <sup>2</sup> )
OFFICE 11	177sqft (ft <sup>2</sup> )
OFFICE 12	174sqft (ft <sup>2</sup> )
TOTAL INTERNAL AREA	1049sqft (ft <sup>2</sup> )

### FOOTPRINT

2ND FLR. FOOT PRINT	1222sqft (ft <sup>2</sup> )
---------------------	-----------------------------



**A** 2ND FLOOR AREA CALCULATION  
**3/7** SCALE: 1/8"=1'-0"

### Notes:

1. ALL PLANS ARE CREATED BY REALTY 360° VIEW AND MADE EXCLUSIVELY FOR REAL ESTATE MARKETING PURPOSES.
2. SIZED AND DIMENSIONS ARE APPROXIMATE. ACTUAL MAY VARY.

### WALL LEGEND

	EXISTING WALL
--	---------------

### ABBREVIATIONS

T.O.P	TOP OF PARAPET
B.O.J	BOTTOM OF JOIST
B.O.D	BOTTOM OF DUCT
B.O.D	BOTTOM OF DUCT
F.F.L	FINISH FLOOR LINE
N.G.L	NATURAL GRADE LINE
CH	CEILING HEIGHT

1	ISSUED FOR INFORMATION	MAB	11/18/20
PHASE	DESCRIPTION:	BY:	DATE:

STATUS: **AS-BUILT**

REALTOR/BROKERAGE:

**Russell Woodard**   
 Mobile: (970) 679-9960  
 Office: (970) 669-1234  
 Email: russellwoodard@remax.net  
 My Website: <http://www.russellwoodard.com/>

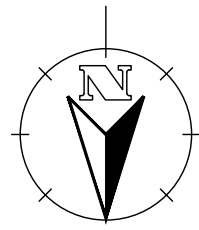
PRESENTED BY:

**REALTY 360° VIEW**   
 Call or Text Us at: 720-770-1230  
 Email Direct at: CR@Realty360View.com  
 Website: <https://realty360view.com/>  
 Address: 242 Linden St Fort Collins, CO 80524

SITE/LOCATION:  
 1194 W. ASH ST. WINDSOR, CO 80550

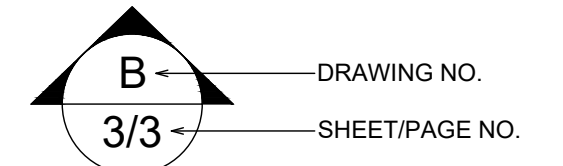
TITLE:  
 AS-BUILT DRAWING

SCALE: 1/8"=1'-0"	DATE: 11/18/20	DRAWN: MAB	APPROVED: RGE
PROJECT NO: Prop.Tours/l5e	SHEET NO: 3/7	PHASE: 1	



**Notes:**

- 1. ALL PLANS ARE CREATED BY REALTY 360° VIEW AND MADE EXCLUSIVELY FOR REAL ESTATE MARKETING PURPOSES.
- 2. SIZED AND DIMENSIONS ARE APPROXIMATE. ACTUAL MAY VARY.



**WALL LEGEND**

	EXISTING WALL
<b>ABBREVIATIONS</b>	
T.O.P	TOP OF PARAPET
B.O.J	BOTTOM OF JOIST
B.O.D	BOTTOM OF DUCT
B.O.D	BOTTOM OF DUCT
F.F.L	FINISH FLOOR LINE
N.G.L	NATURAL GRADE LINE
CH	CEILING HEIGHT

1	ISSUED FOR INFORMATION	MAB	11/18/20
PHASE	DESCRIPTION:	BY:	DATE:

STATUS: **AS-BUILT**

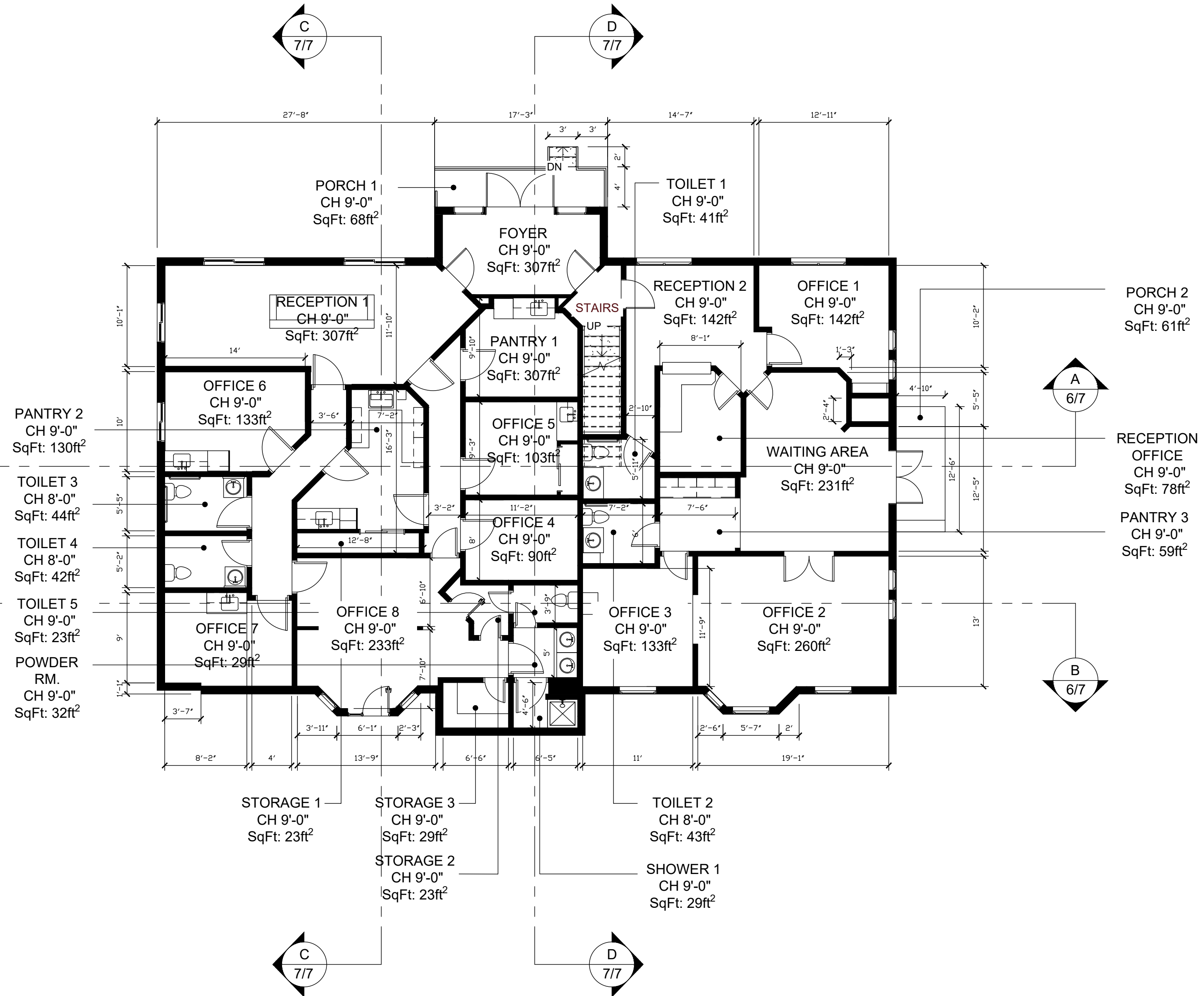
REALTOR/BROKERAGE:  
**Russell Woodard**   
 Mobile: (970) 679-9960  
 Office: (970) 669-1234  
 Email: russellwoodard@remax.net  
 My Website: <http://www.russellwoodard.com/>

PRESENTED BY:  
  
**REALTY 360° VIEW**  
 Call or Text Us at: 720-770-1230  
 Email Direct at: CR@Realty360View.com  
 Website: <https://realty360view.com/>  
 Address: 242 Linden St Fort Collins, CO 80524

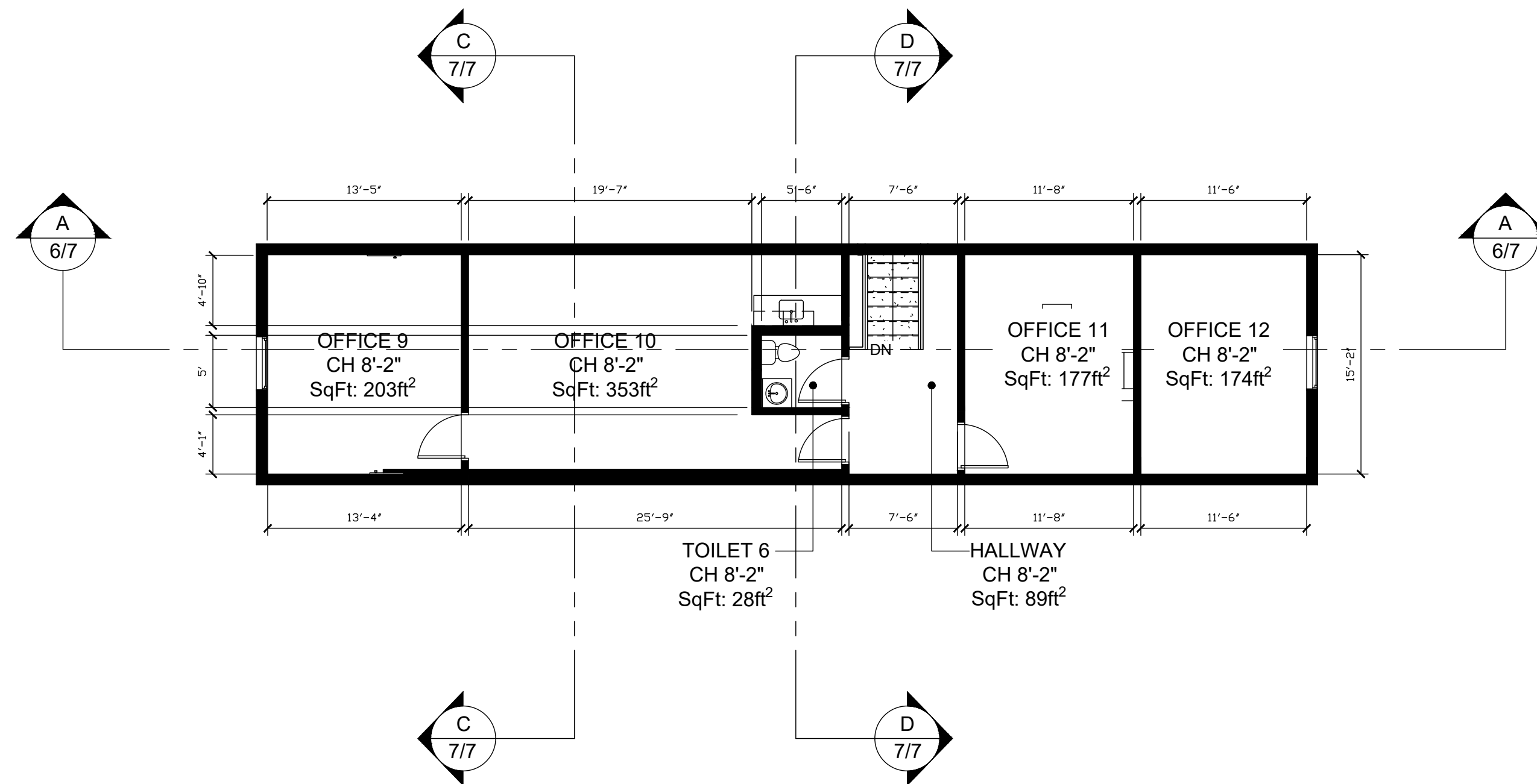
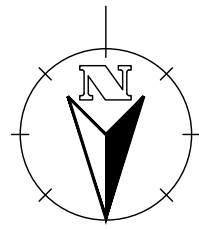
SITE/LOCATION:  
 1194 W. ASH ST. WINDSOR, CO 80550

TITLE:  
 AS-BUILT DRAWING

SCALE: 1/8"=1'-0"	DATE: 11/18/20	DRAWN: MAB	APPROVED: RGE
PROJECT NO: Prop.Tours/l5e	SHEET NO: 4/7	PHASE: 1	



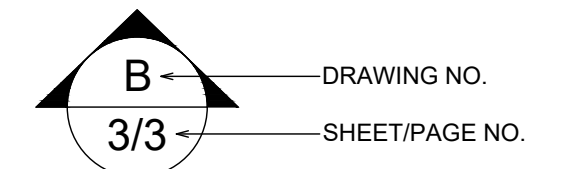
**A** **FIRST FLOOR PLAN**  
 4/7 SCALE: 1/8"=1'-0"



**A** SECOND FLOOR PLAN  
5/7 SCALE: 1/8"=1'-0"

Notes:

1. ALL PLANS ARE CREATED BY REALTY 360° VIEW AND MADE EXCLUSIVELY FOR REAL ESTATE MARKETING PURPOSES.
2. SIZED AND DIMENSIONS ARE APPROXIMATE. ACTUAL MAY VARY.



WALL LEGEND

EXISTING WALL

ABBREVIATIONS

T.O.P	TOP OF PARAPET
B.O.J	BOTTOM OF JOIST
B.O.D	BOTTOM OF DUCT
B.O.D	BOTTOM OF DUCT
F.F.L	FINISH FLOOR LINE
N.G.L	NATURAL GRADE LINE
CH	CEILING HEIGHT

1	ISSUED FOR INFORMATION	MAB	11/18/20
PHASE	DESCRIPTION:	BY:	DATE:

STATUS: AS-BUILT

REALTOR/BROKERAGE:

Russell Woodard   
 Mobile: (970) 679-9960  
 Office: (970) 669-1234  
 Email: russellwoodard@remax.net  
 My Website: <http://www.russellwoodard.com/>

PRESENTED BY:

REALTY 360° VIEW   
 Call or Text Us at: 720-770-1230  
 Email Direct at: CR@Realty360View.com  
 Website: <https://realty360view.com/>  
 Address: 242 Linden St Fort Collins, CO 80524

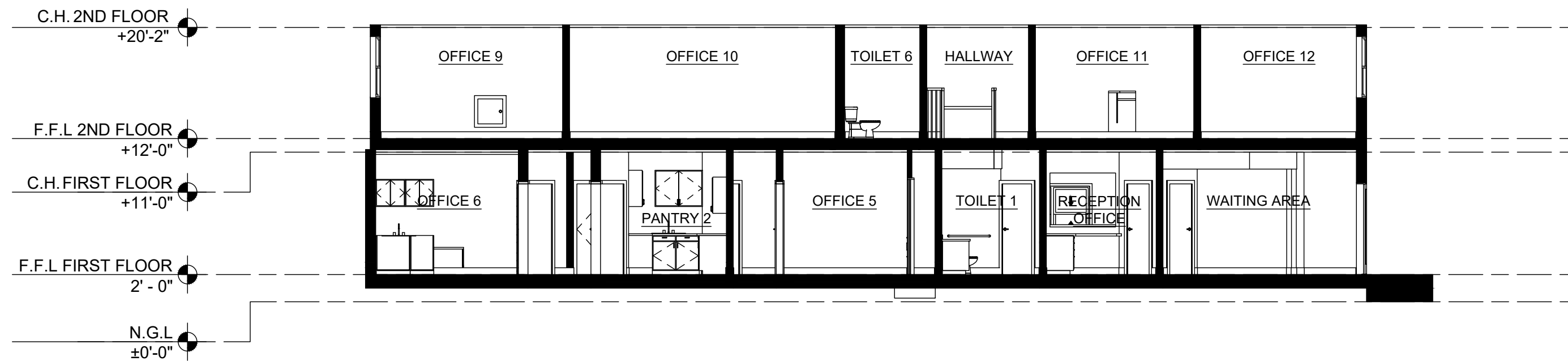
SITE/LOCATION:  
1194 W. ASH ST. WINDSOR, CO 80550

TITLE:  
AS-BUILT DRAWING

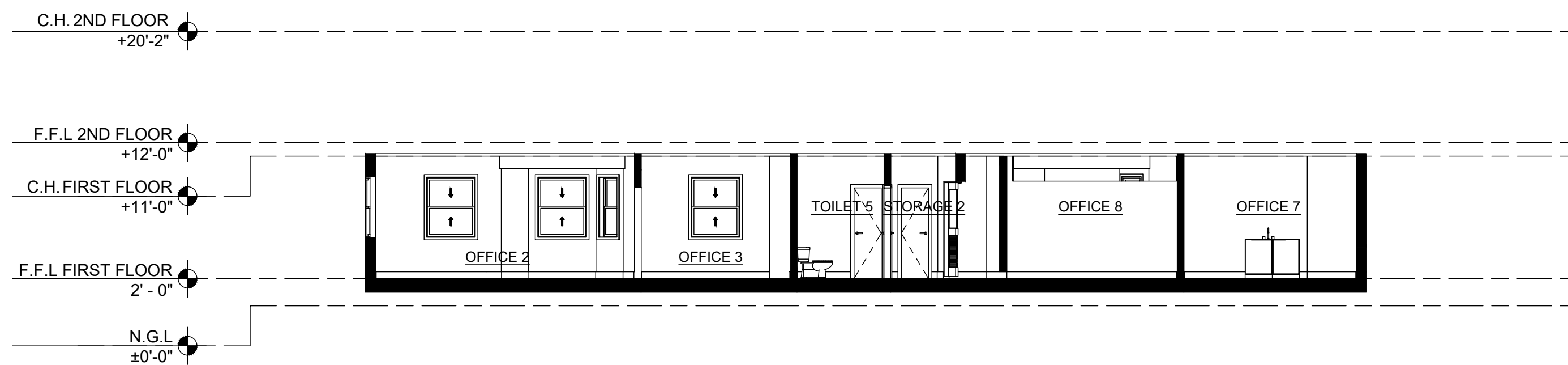
SCALE: 1/8"=1'-0"	DATE: 11/18/20	DRAWN: MAB	APPROVED: RGE
PROJECT NO: Prop.Tours/l5e	SHEET NO: 5/7	PHASE: 1	

Notes:

1. ALL PLANS ARE CREATED BY REALTY 360° VIEW AND MADE EXCLUSIVELY FOR REAL ESTATE MARKETING PURPOSES.
2. SIZED AND DIMENSIONS ARE APPROXIMATE. ACTUAL MAY VARY.



**A** LONGITUDINAL SECTION A  
6/7 SCALE: 1/8"=1'-0"



**B** LONGITUDINAL SECTION B  
6/7 SCALE: 1/8"=1'-0"

WALL LEGEND

	EXISTING WALL
--	---------------

ABBREVIATIONS

T.O.P	TOP OF PARAPET
B.O.J	BOTTOM OF JOIST
B.O.D	BOTTOM OF DUCT
B.O.D	BOTTOM OF DUCT
F.F.L	FINISH FLOOR LINE
N.G.L	NATURAL GRADE LINE
CH	CEILING HEIGHT

1	ISSUED FOR INFORMATION	MAB	11/18/20
PHASE	DESCRIPTION:	BY:	DATE:

STATUS: AS-BUILT

REALTOR/BROKERAGE:

Russell Woodard   
 Mobile: (970) 679-9960  
 Office: (970) 669-1234  
 Email: russellwoodard@remax.net  
 My Website: <http://www.russellwoodard.com/>

PRESENTED BY:

REALTY 360° VIEW   
 Call or Text Us at: 720-770-1230  
 Email Direct at: CR@Realty360View.com  
 Website: <https://realty360view.com/>  
 Address: 242 Linden St Fort Collins, CO 80524

SITE/LOCATION:  
1194 W. ASH ST. WINDSOR, CO 80550

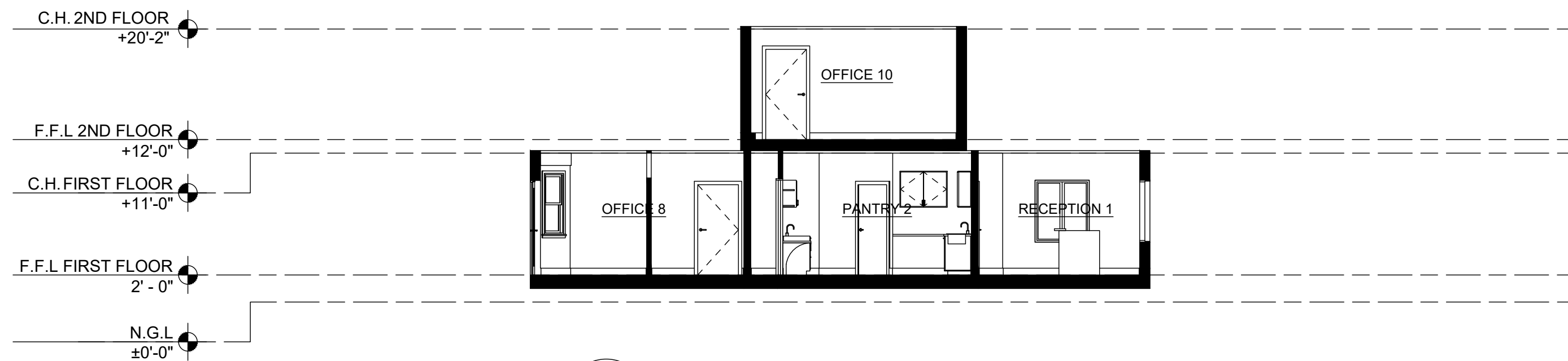
TITLE:  
AS-BUILT DRAWING

SCALE: 1/8" = 1'-0"	DATE: 11/18/20	DRAWN: MAB	APPROVED: RGE
PROJECT NO: Prop.Tours/l5e	SHEET NO: 6/7	PHASE: 1	

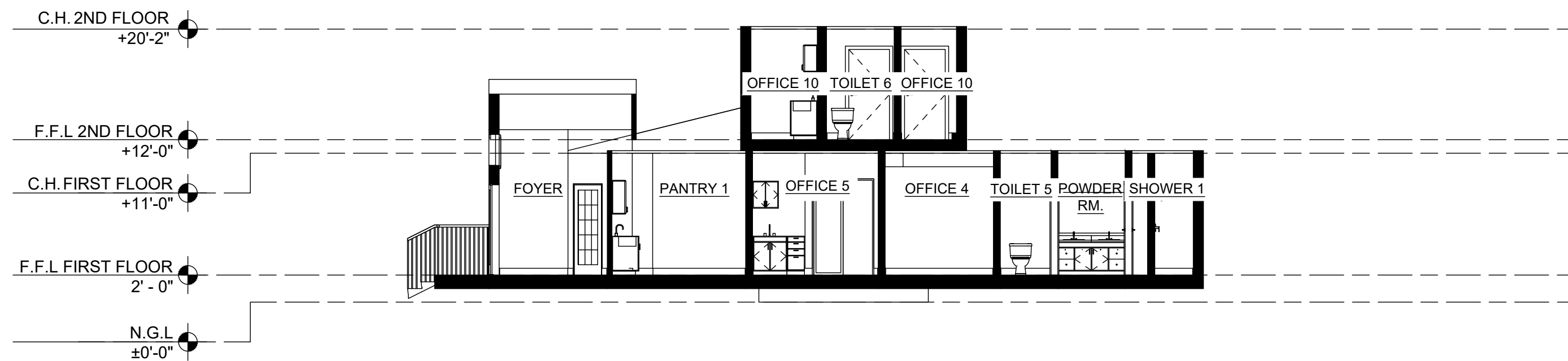


Notes:

- 1. ALL PLANS ARE CREATED BY REALTY 360° VIEW AND MADE EXCLUSIVELY FOR REAL ESTATE MARKETING PURPOSES.
- 2. SIZED AND DIMENSIONS ARE APPROXIMATE. ACTUAL MAY VARY.



**C** LONGTITUDINAL SECTION C  
7/7 SCALE: 1/8"=1'-0"



**D** LONGTITUDINAL SECTION D  
7/7 SCALE: 1/8"=1'-0"

WALL LEGEND

EXISTING WALL

ABBREVIATIONS

T.O.P	TOP OF PARAPET
B.O.J	BOTTOM OF JOIST
B.O.D	BOTTOM OF DUCT
B.O.D	BOTTOM OF DUCT
F.F.L	FINISH FLOOR LINE
N.G.L	NATURAL GRADE LINE
CH	CEILING HEIGHT

1	ISSUED FOR INFORMATION	MAB	11/18/20
PHASE	DESCRIPTION:	BY:	DATE:

STATUS: AS-BUILT

REALTOR/BROKERAGE:

Russell Woodard   
 Mobile: (970) 679-9960  
 Office: (970) 669-1234  
 Email: russellwoodard@remax.net  
 My Website: <http://www.russellwoodard.com/>

PRESENTED BY:

  
**REALTY 360° VIEW**  
 Call or Text Us at: 720-770-1230  
 Email Direct at: CR@Realty360View.com  
 Website: <https://realty360view.com/>  
 Address: 242 Linden St Fort Collins, CO 80524

SITE/LOCATION:  
1194 W. ASH ST. WINDSOR, CO 80550

TITLE:  
AS-BUILT DRAWING

SCALE: 1/8" = 1'-0"	DATE: 11/18/20	DRAWN: MAB	APPROVED: RGE
PROJECT NO: Prop.Tours/l5e	SHEET NO: 7/7	PHASE: 1	